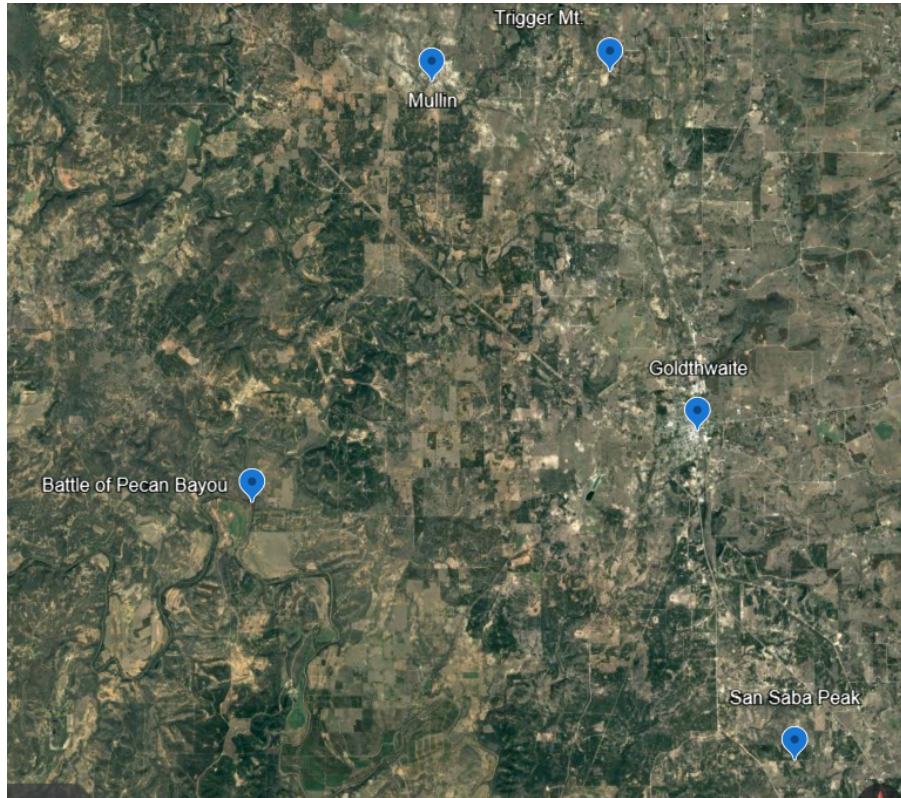
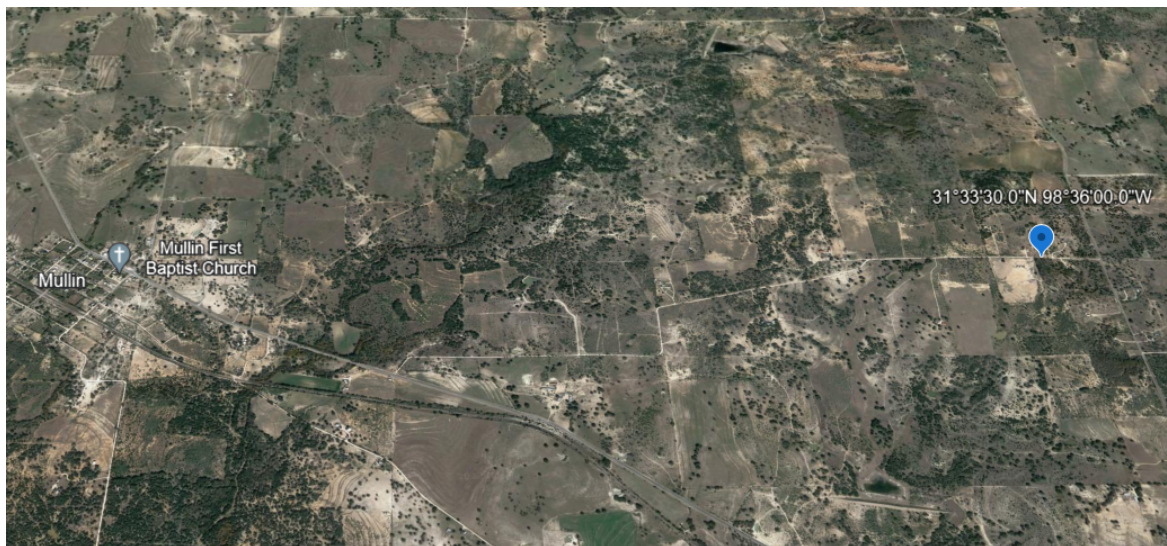


## Pentatuhkah Mapping Locations Mills County Texas

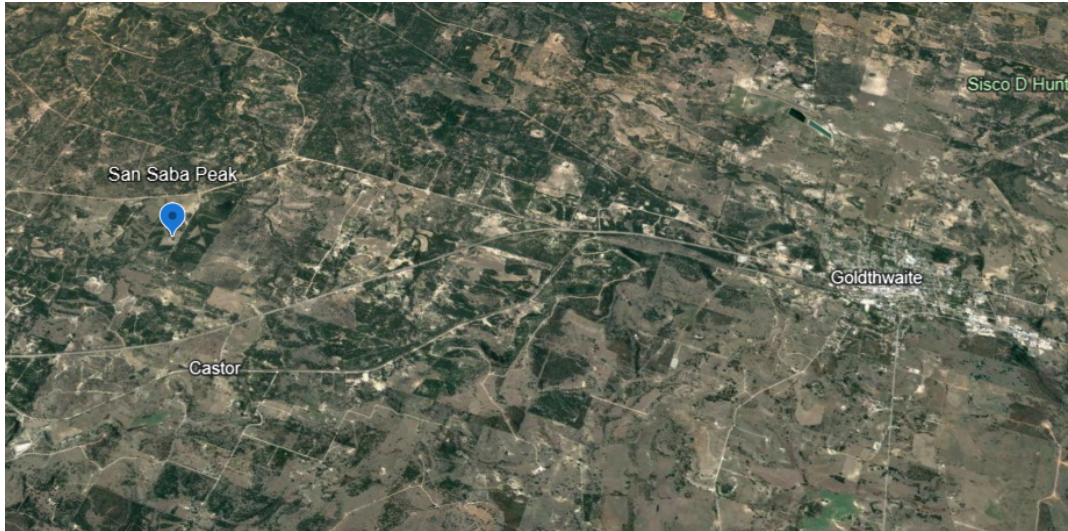


- 1) Trigger Mountain = Off County Road 188 between Mullin and Goldthwaite, most likely a high smoke signaling point for American Indians  
31 33'50.12" N 98 36' 05.61" W



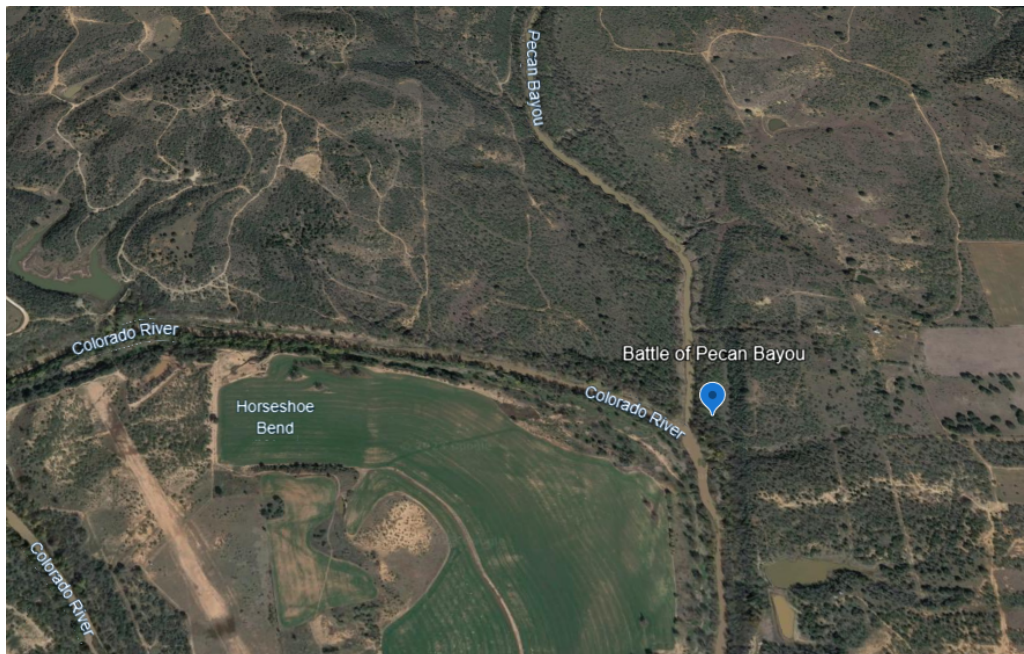
- 2) San Saba Peak= Off County Road 143 south of Goldthwaite, most likely a high smoke signaling point for American Indians, natural spring, camping location

31 21' 31.82" N 98 32' 27.42" W



- 3) Battle of Pecan Bayou = Off County Road 414 west of Goldthwaite, site of a battle between Comanches and 6 Men from Hanna Valley, also known locally as a camping location for Comanche

31 25' 43.28' N 98 43' 30.23" W



Learn More: <https://txmchm.genealogyvillage.com/>